



SMITHVILLE 2023 SOLID WASTE REPORT

PARTNERSHIP SINCE 2017

PROVIDING SOLID WASTE, RECYCLING SERVICES



Since beginning the relationship as WCA in 2017, GFL has worked to build and expand our partnership with Smithville on a foundation of trust, respect and reliability.



Green Today. Green For Life.

gflenv.com

RESIDENTIAL UPDATE

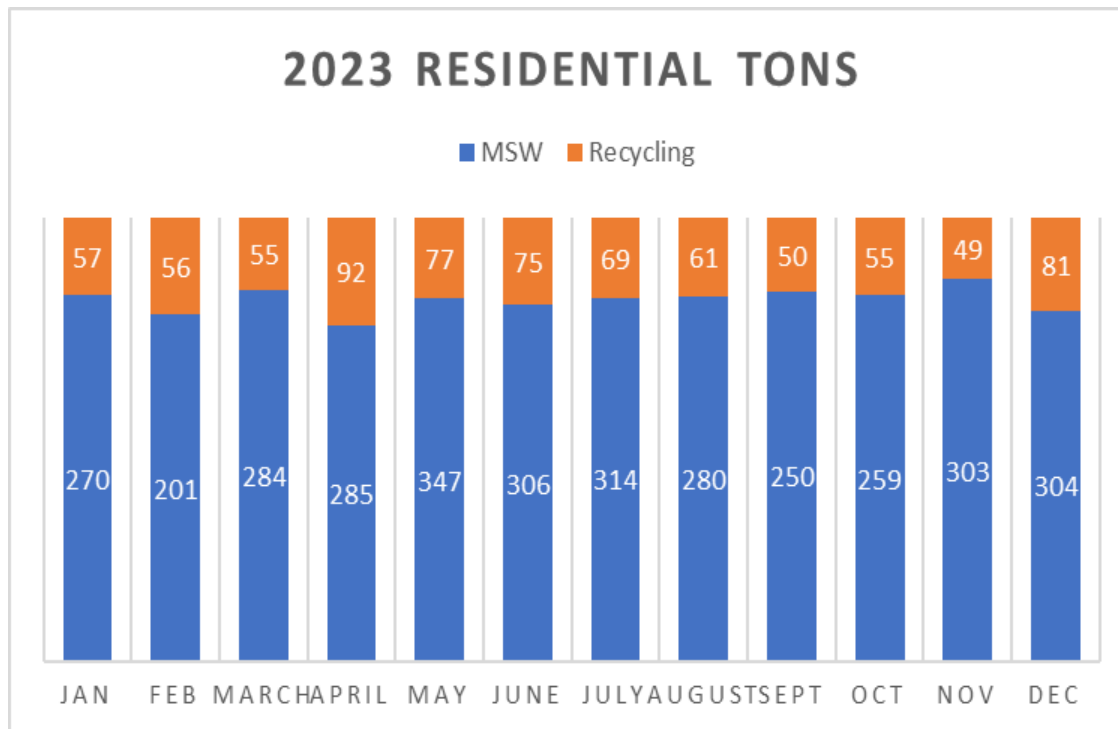
STATS FROM THE CURB

- Trash volumes increased 3 percent (3,405 tons in 2023; 3,315 tons in 2022)
- Recycling increased 5 percent (746 tons in 2023; 710 tons in 2022)
- GFL serviced 3,625 households in 2023, with 273 households renting a second cart
- Overage stickers have been popular for households that occasionally generate excess trash
- The twice-yearly bulky item collection program remains popular with residents



2023 TRASH, RECYCLE TONS

TRASH UP 3%; RECYCLING UP 5% OVER 2022

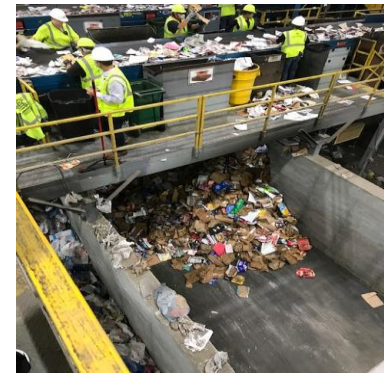


	MSW	REC
January	270	57
February	201	56
March	284	55
April	285	92
May	347	77
June	306	75
July	314	69
August	280	61
September	250	50
October	259	55
November	303	49
December	304	81
TOTAL	3,405	746

OPERATIONAL OVERVIEW

WEEKLY WASTE COLLECTION, RESPONSIBLE MANAGEMENT

- Smithville households are serviced through automated collection, which provides for enhanced collection efficiency and greater workplace safety
- Trash and recycling carts are generally collected at the curb, but GFL provides houseline service for elderly residents and residents with physical challenges
- Smithville materials are transported to GFL's Kansas City transfer station
- Solid waste is transferred to the company's Sedalia landfill
- Recyclables are hauled to the company's Materials Recovery Facility in Harrisonville



SUSTAINABILITY PROJECTS

**FACILITY WILL POWER THE EQUIVALENT OF
10,400 HOMES PER DAY**



GFL has started construction of a renewable gas project at its Sedalia landfill, the company's first RNG facility built by the new subsidiary, GFL Renewables LLC

SHREDDING, E-WASTE

ANNUAL DIVERSION EVENT REMAINS POPULAR



GFL funded a ProShred event that **diverted 3,150 pounds of paper**, the equivalent of **26 mature trees saved**. The 2024 event is scheduled for April 6.

COMMERCIAL CARDBOARD

SUCCESSFUL PROGRAM SAVED 20 TONS FROM LANDFILL



GFL added a second cardboard recycling container for downtown merchants, who diverted approximately 40,000 lbs of material in 2023.

A CLEANER, QUIETER FLEET

**NEW TRUCKS CUT CO2 EMISSIONS BY 30%;
ENGINE NOISE REDUCED BY 10 DECIBELS**



At GFL Environmental, our commitment to a greener future is uncompromising. By embracing Compressed Natural Gas (CNG) technology in our Smithville collection vehicles, we're driving innovation, ensuring cleaner air, increasing uptime, and paving the path to a sustainable tomorrow for our region and the planet that we all share